

Introduction

Extraction treatment plan in border line cases with Class II malocclusion is still controversial among orthodontists. Alternatively, non-extraction treatment options have been suggested. Which might lead to protruded arches and prominent lips; yet this concept is not well supported. Several non-extraction approaches have been considered using growth modification and molar distalization appliances. Molar distalization, using Pendulum appliance, has been reported as a treatment option for patients with mild Class II skeletal malocclusion. Pendulum appliance can be indicated for patients with end-to-end Class II molar relationship, mild to moderate crowding in the maxillary arch, and loss of arch length due to premature loss of second deciduous maxillary molars. To maintain the molar in the distalized position, the use of a Nance appliance supported by skeletal temporary anchorage device (TAD) has been indicated (1-4).

Case Presentation

A 12-year-old patient with the chief complaint of impacted maxillary canine, skeletal Class II relation, high mandibular plane angle, convex facial profile, and competent lips. The patient exhibited a Class II molar relationship, moderate maxillary crowding, and mild mandibular crowding with buccally impacted upper canines on both sides.

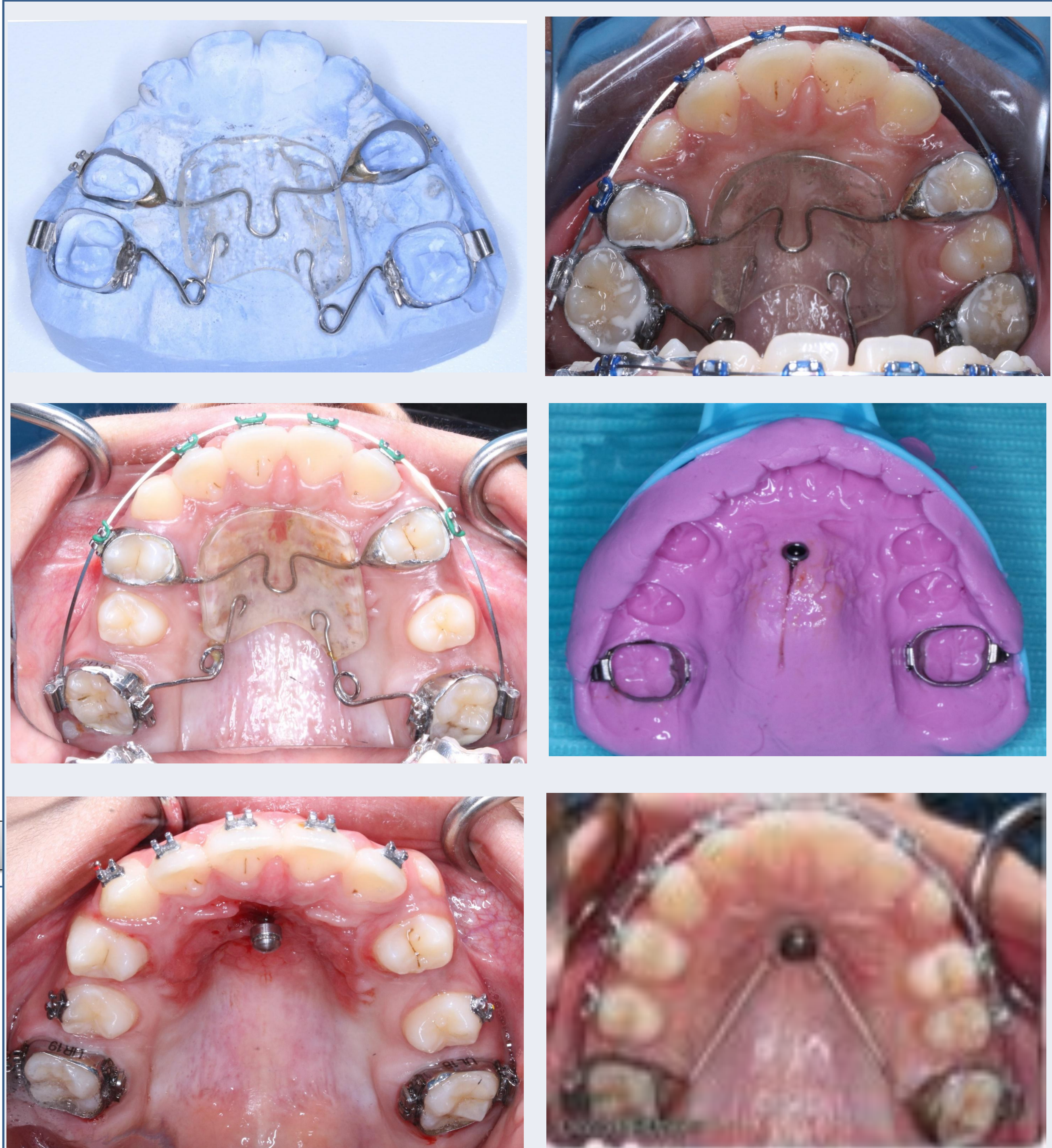


Fig 2. Pendulum and TAD Supported Anchorage Appliance



Fig 1. Pretreatment Extra-Oral Photos and Intra-Oral Photos



Fig 3. Treatment progress Extra-Oral Photos & Intra-Oral Photos

Conclusion

Molars distalization with a Pendulum appliance followed by TAD-supported Nance appliance can be used as an effective approach in the correction of Class II malocclusion and impacted canine.

References

- 1- Chaushu S, Bongart M, Aksoy A Ben-Bassat Y, Becker A Buccal ectopia of maxillary canines with no crowding. Am J Orthod Dentofacial Orthop 2009;136:218-23.
- 2- Beighton P, De Paeppe A, Steinmann B, Tsiouras P, Wenstrup RJ. Ehlers-Danlos syndrome: revised nosology, Villefranche, 1997. Am J Med Genet 1998;7731-7.
- 3- Verma SK Rastogi K, Bushan R Sagar M. Molar distalisation by pendulum appliance. BMJ Case Rep 2013;2013. <https://doi.org/10.1136/bcr-2012-008461>.
- 4- Patil RU, Prakash A, Agarwal A Pendulum therapy of molar distalization in mixed dentition. Int J Clin Pediatr Dent 2016;67-73. 151 Piette E, Douniau R.